

**30 Apr 2008 Charts for Panel Discussion at White House
Initiative for HBCU Conference, Norfolk VA.**

Public/Private Partnerships (P3) for HBCU Infrastructure and Student Development

**Dr. James A. Fabunmi
Consulting Scientist
American Heritage Defense Corporation (AHDC)
[Non-Profit 501(c)3]
Tel.: 301 249 2900/Cell: 202 631 7795
Email: jfabunmi@alum.mit.edu
URL: <http://ahdcsetwas.googlepages.com>**

**An Initiative of the Science, Engineering, Technology and
Workforce Development for America's Security (SETWAS)
Alliance © AHDC 2002-2008**

27-Apr-08

PROPRIETARY

1

Legacy Defense-Industry-Academia RDT&E Base

A sample of Federally Funded Research and Development Centers administrated by universities & colleges

	Yr Est.	Budget	Institution
Ames Laboratory	1947	\$29M (FY2003)	Iowa State University
Argonne National Laboratory	1946	\$475M (Est. Annual)	University of Chicago
Brookhaven National Laboratory	1947	\$467M (FY2005)	Stony Brook University
Lawrence Berkeley National Laboratory	1931	\$500M (FY2004)	University of California
Fermi National Accelerator Laboratory	1967	\$316M (FY2005)	University Research Associates Consortium
Jet Propulsion Laboratory	1944	\$1.0B (Est. Annual)	California Institute of Technology
Lawrence Livermore National Laboratory	1952	\$1.6B (FY2003)	University of California
Lincoln Laboratory	1951	\$328M (FY1994)	Massachusetts Institute of Technology
Los Alamos National Laboratory	1943	\$1.2B (Est. Annual)	University of California
National Astronomy and Ionosphere Center	1960	\$10.8M (FY2006)	Cornel University
Princeton Plasma Physics Laboratory	1951	\$70M (FY2003)	Princeton University
Software Engineering Institute	1984	\$33M (FY 1994)	Carnegie Mellon University
Stanford Linear Accelerator Center	1962	\$280M (FY 2005)	Stanford University

NOTES:

1. This list does not include many FFRDCs managed by consortia of Universities, Non Profit Corporations and Industry
2. The list does not include University Affiliated Research Centers (UARC)
3. There are no FFRDC or UARC managed by minority institutions to date.

- This is how the challenge of developing science, engineering, technology and workforce was met in the past....

Top 25 NASA Contractors

Government Executive August 15, 2007

Total Purchases: \$14,415,325,294

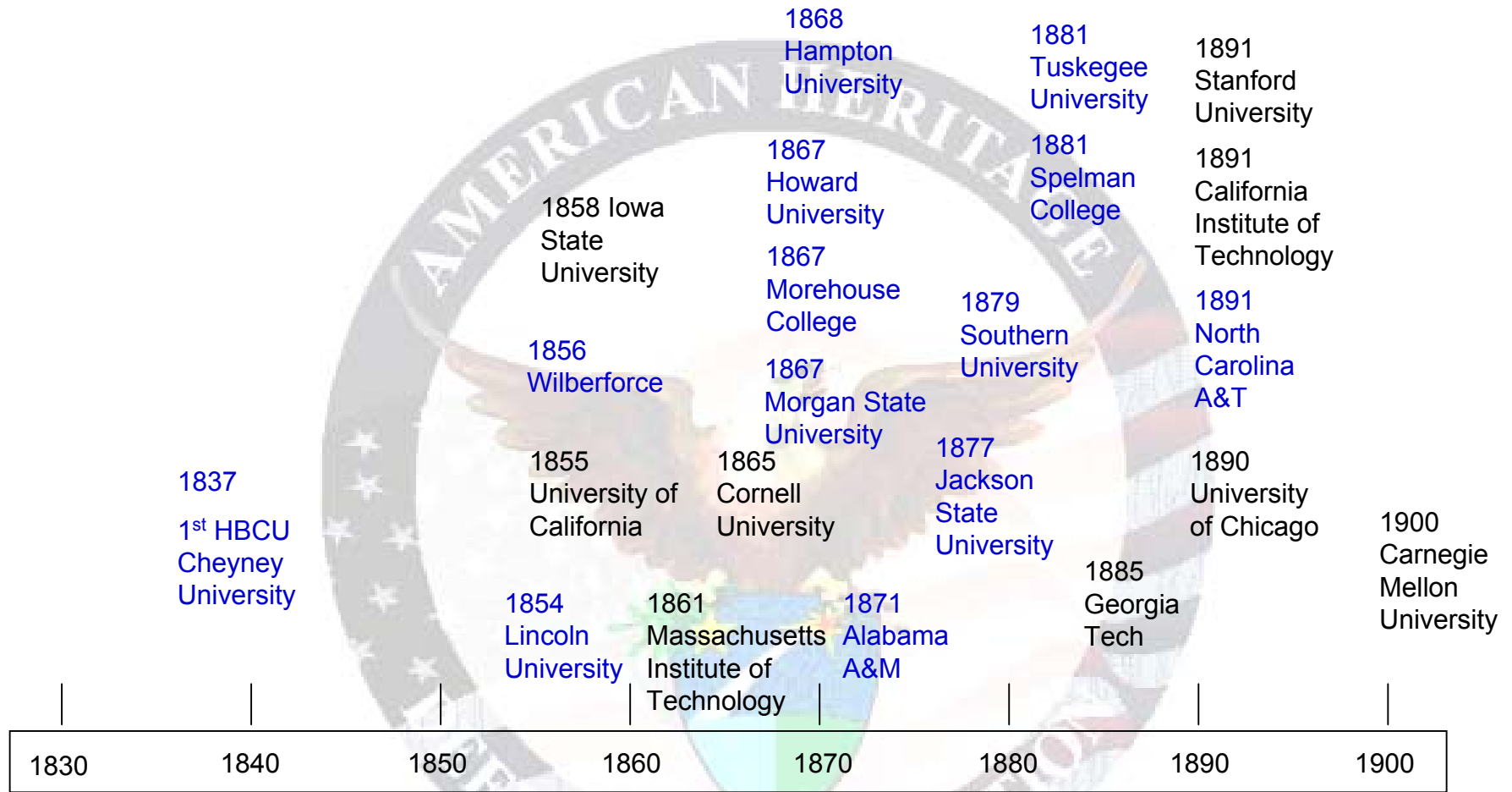
Rank	Parent company	Amount	Market share
1	Lockheed Martin Corp.	\$2,418,561,053	16.77%
2	Boeing Co.	1,821,079,271	12.63
3	California Institute of Technology	1,712,226,318	11.87
4	United Technologies Corp.	519,894,666	3.60
5	Northrop Grumman Corp.	471,989,178	3.27
6	Alliant Techsystems Inc.	460,036,877	3.19
7	Jacobs Engineering Group Inc.	437,678,315	3.03
8	SAIC	434,989,707	3.01
9	Honeywell Inc.	276,535,610	1.91
10	Group 4 Securicor PLC	186,109,403	1.29
11	Computer Sciences Corp.	157,889,107	1.09
12	Johns Hopkins University	140,384,656	0.97
13	Swales Aerospace	127,232,572	0.88
14	Raytheon Co.	119,864,084	0.83
15	Ball Corp.	116,065,216	0.80
16	Perot Systems Corp.	110,330,680	0.76
17	ITT Industries	104,850,715	0.72
18	Wyle Laboratories Inc.	102,869,342	0.71
19	University of California System	102,285,730	0.70
20	SGT Inc.	99,982,998	0.69
21	Universities Space Research Association	97,356,261	0.67
22	InDyne Inc.	90,692,664	0.62
23	Arctic Slope Regional Corp.	81,075,380	0.56
24	Government of Russia	80,001,576	0.55
25	Mississippi Space Services	79,365,323	0.55

27-Apr-08

PROPRIETARY

3

HBCU Historical Timeline



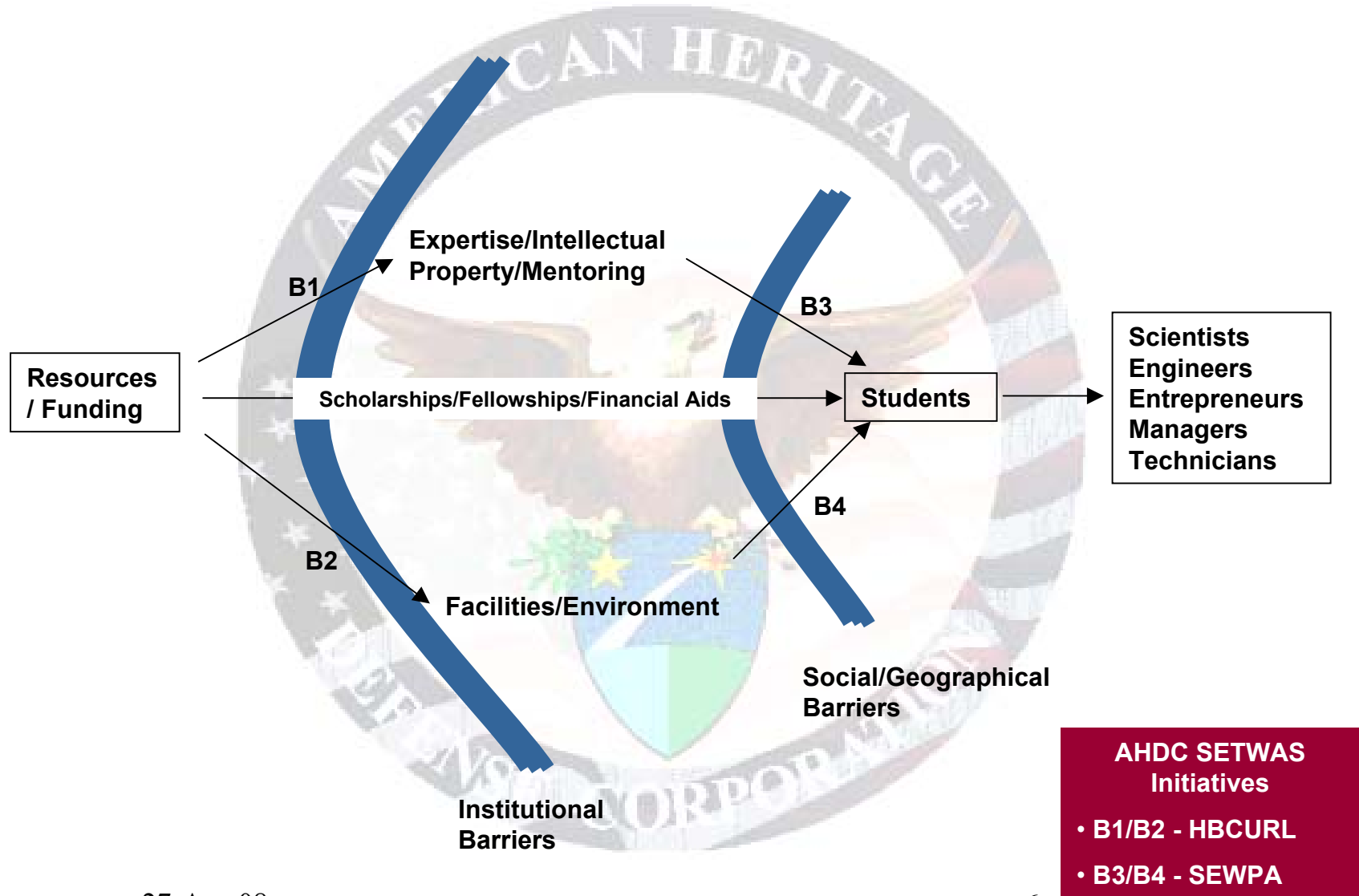
27-Apr-08

PROPRIETARY

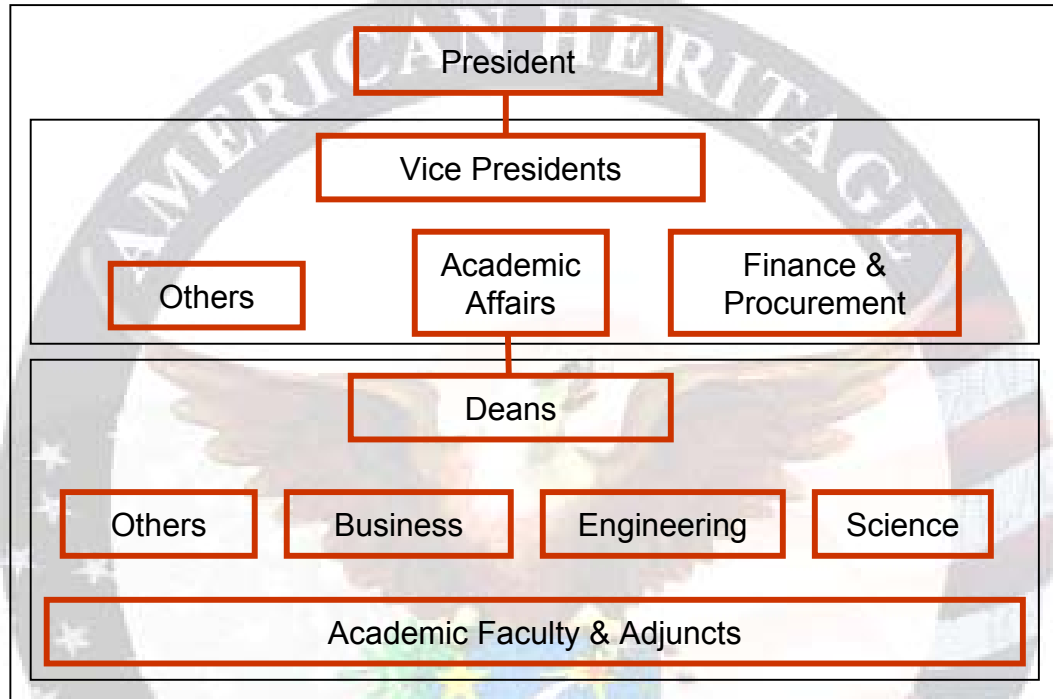
Diversity in 21st Century Global Economy

- **Global Markets are Diversified**
- **Global Competitors are Diversified**
- **Global Workforce is Diversified**
- **HBCU/MI have a key role to play in America's competitiveness in the global economy**
- **Government and Industry are motivated by this**
- **Strong motivation to partner with HBCU to enhance infrastructure and student development**

Bridges to Diversity



Constraints of Current HBCU University Structure



“We have no one on hand to chase after Applied Research Projects”

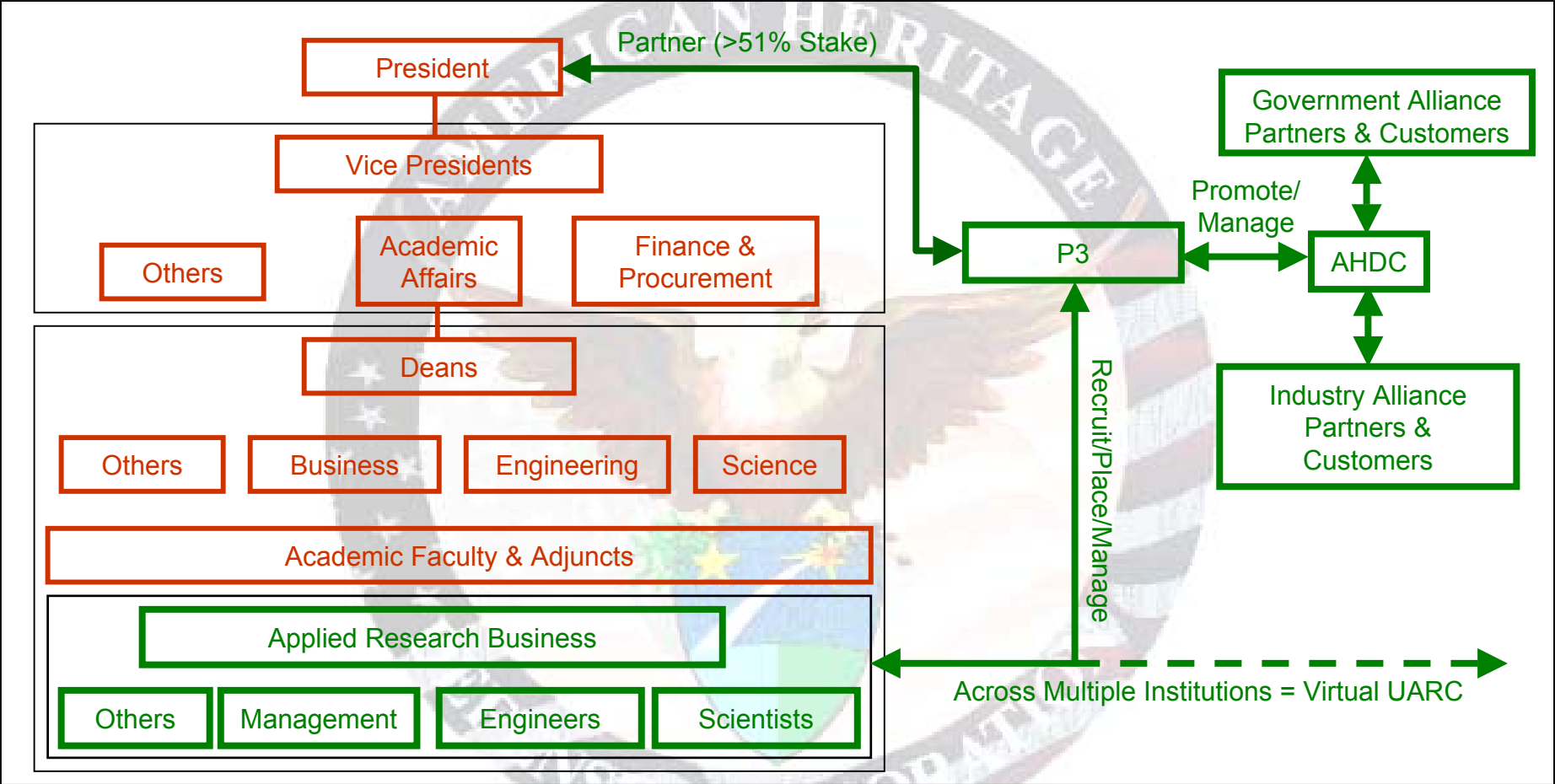
“Our Structure does not allow us to handle efforts of that magnitude”

– Typical Quotes from University Administrators

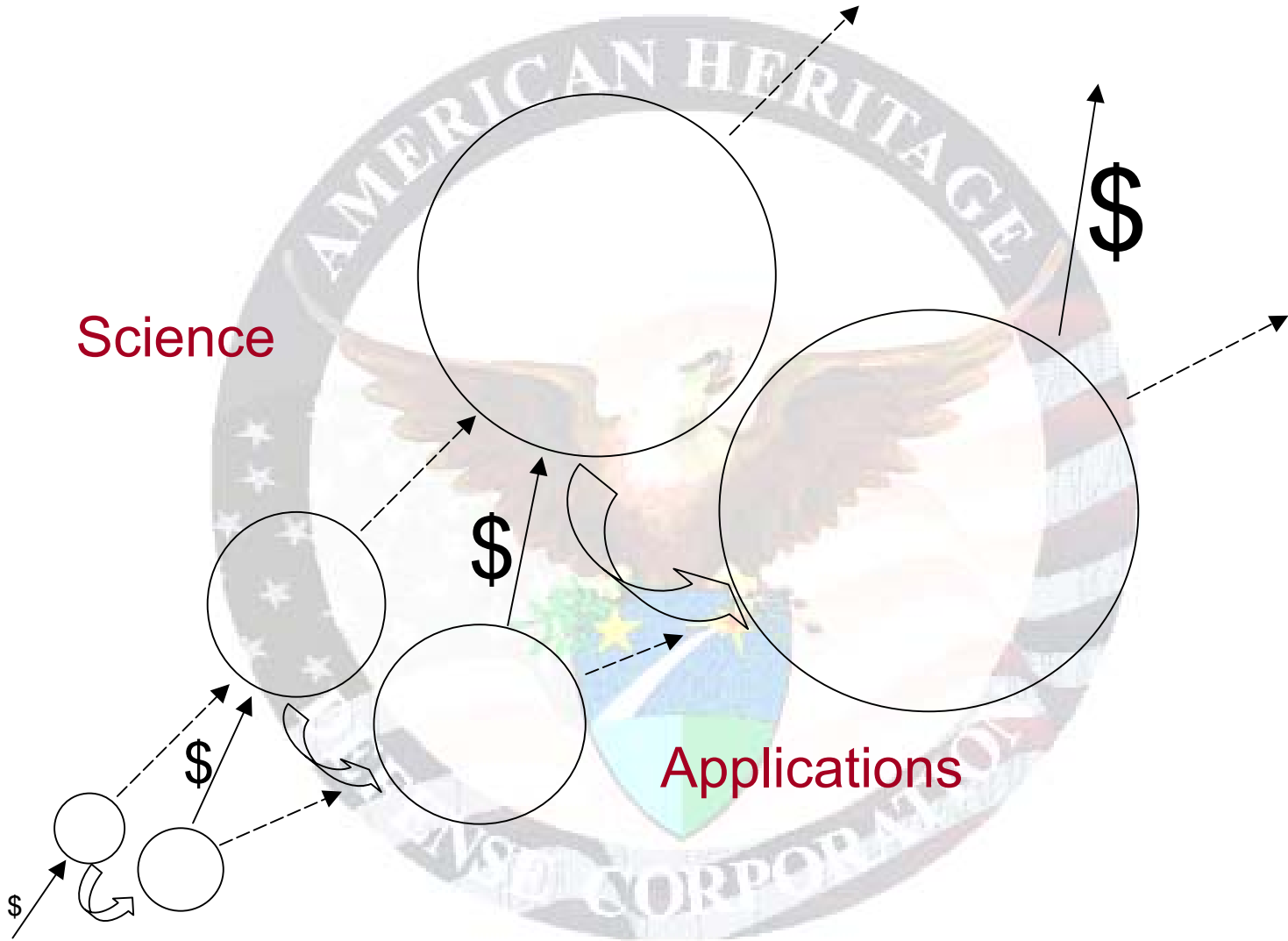
27-Apr-00

PROPRIETARY

AHDC Products and Services for Developmental HBCU Structure



Growth Engine



Science

Applications

27-Apr-08

PROPRIETARY

9

Recap

“Esin’waju ni t’ehin nwo s’are”

Yoruba Proverb = A race horse runs according to those it sees in front of it.

Meaning: HBCUs need to look to top tier world-class Universities for best practices (and not settle for comparisons among themselves)

- **AHDC Consulting Services – Retainer basis (not-for-profit does not mean free!):**
Across the board expertise in science, engineering, technology, and entrepreneurship – nationwide network of leading experts
- **AHDC P3 Initiatives - Partnerships with Universities, Venture Capitalists, Developers, Government Agencies, Major Industry and other Businesses to establish HBCURLs**
- **AHDC Program Development Services – Support Service Provider to Government Program Directors and Managers**
- **AHDC SETWAS Initiatives – Broadening the base of production of Science Engineering Technology and Workforce e.g. SEWPA**

Contact Information

Dr. James A. Fabunmi, Consulting Scientist
The American Heritage Defense Corporation (AHDC)

14410 Secretariat Drive
Mitchellville, MD 20721

Tel.: 301 249 2900

Cell: 202 631 7795

Email: jfabunmi@alum.mit.edu

URL: <http://ahdcsetwas.googlepages.com>